



Venue Hire

VENUE 01

ADS-HQ



ADDRESS

40-42 Beetham Parade, Rosanna VIC



PHONE

+61 497 952 722



WEBSITE

actiondramastudio.com.au



EMAIL

info@actiondramastudio.com.au



ADS-HQ

Centrally located next to Rosanna train station in Melbourne's North East, and less than half an hour from Melbourne's CBD, our Rosanna venue is easily accessible with shops, restaurants and good coffee all a stones throw away!

1. Our Downstairs Space is our largest fully carpeted space, making it ideal for versatile set-ups to cater to your needs. Ideal space for rehearsals, seminars, meetings, classes and intimate performances or presentations.

2. Our Raised Upstairs Studio is our smaller, fully carpeted, more intimate space complete with windows to see into our downstairs venue and is ideal for rehearsals, classes, meetings and smaller events.

3. Our Office Space is perfect for you if you're looking for a space or even just a desk to work from. With multiple sitting/standing desks, wifi access and all required office amenities, you'll be set-up for work in no time at all.

SPECS & INFO

Dimensions: Downstairs: L: 10.9m x W: 5m (54.5m²)
Upstairs: L: 9.1m x W: 5.2m (47.3m²)
Office: L: 5.2m x W: 3.8m (19.6m²)
TOTAL M²: 131.5m²

Capacity: Downstairs: 30-40 Upstairs: 20-25
Office: 5-10 TOTAL: 60-75max

Parking: Beetham Pde: 2P, 8am-6pm (Mon-Sat) FREE OTHER TIMES
Lower Plenty Rd: 2P, 8am-6pm (Mon-Sat) FREE OTHER TIMES
Ellesmere Pde: 4P, 8am-6pm FREE OTHER TIMES
Hillside Rd: 4P, 8am-6pm FREE OTHER TIMES
Rosanna Station: *FREE ALL DAY*

Availability: MON - WED: Morning/Day Available (Until 3pm)
THU - SUN: All Day Available (No time Restrictions)

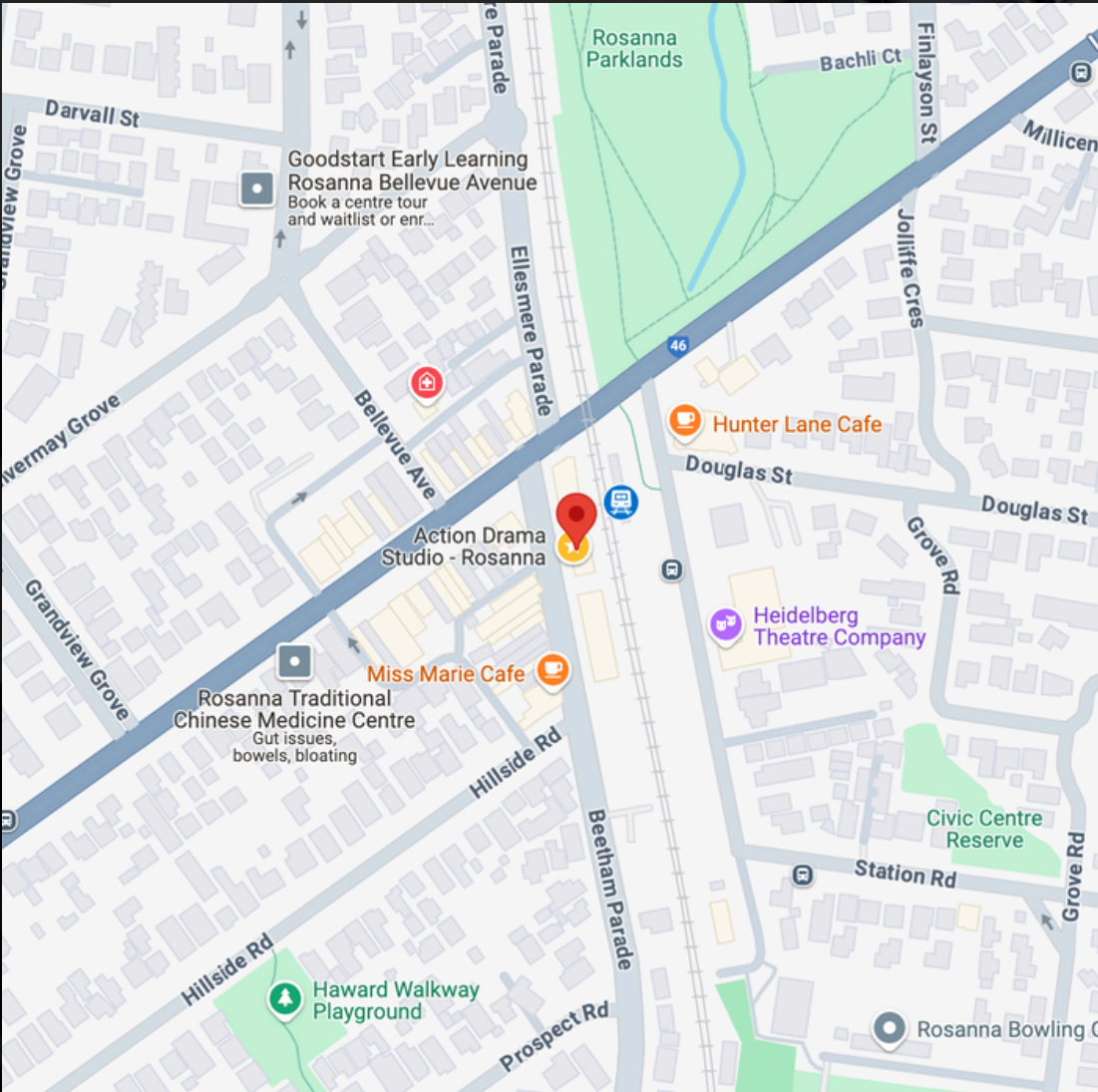
Nearby: Rosanna Railway Station: 50m (Next Door)
Miss Marie's Cafe (Great Coffee): 80m
IGA Local Grocer: 180m
NEW Woolworths (Opening soon): 150m
Plenty of local amenities, retailers, restaurants and services all within a short walks distance.



FLOORPLAN



MAP





Venue Hire

VENUE 02:

The Action Drama SPACE



ADDRESS

7/83-87 Main Street, Greensborough VIC



PHONE

+61 497 952 722



WEBSITE

actiondramastudio.com.au



EMAIL

info@actiondramastudio.com.au



The Action Drama SPACE

Conveniently located in Greensborough, just a short 2 minute walk away from the station and the plaza, our Greensborough venue boasts a prime location adjacent to a vibrant hub of shops, restaurants, and cafes all within walking distance. This venue is located in a shared office building and comes with two available spaces:

- 1. Our Large Space (Room 7)** offers the ultimate flexibility for customized setups. Whether you require seating, technical equipment, or other specialised needs, we've got you covered. This adaptable space is perfect for a wide range of events, including rehearsals, seminars, meetings, classes, and intimate performances or presentations.
- 2. Our Smaller Space (Room 7A)** is perfect for smaller gatherings. This room is ideal for intimate rehearsals, classes, and meetings. Enjoy access to all our amenities, ensuring a comfortable and productive experience.

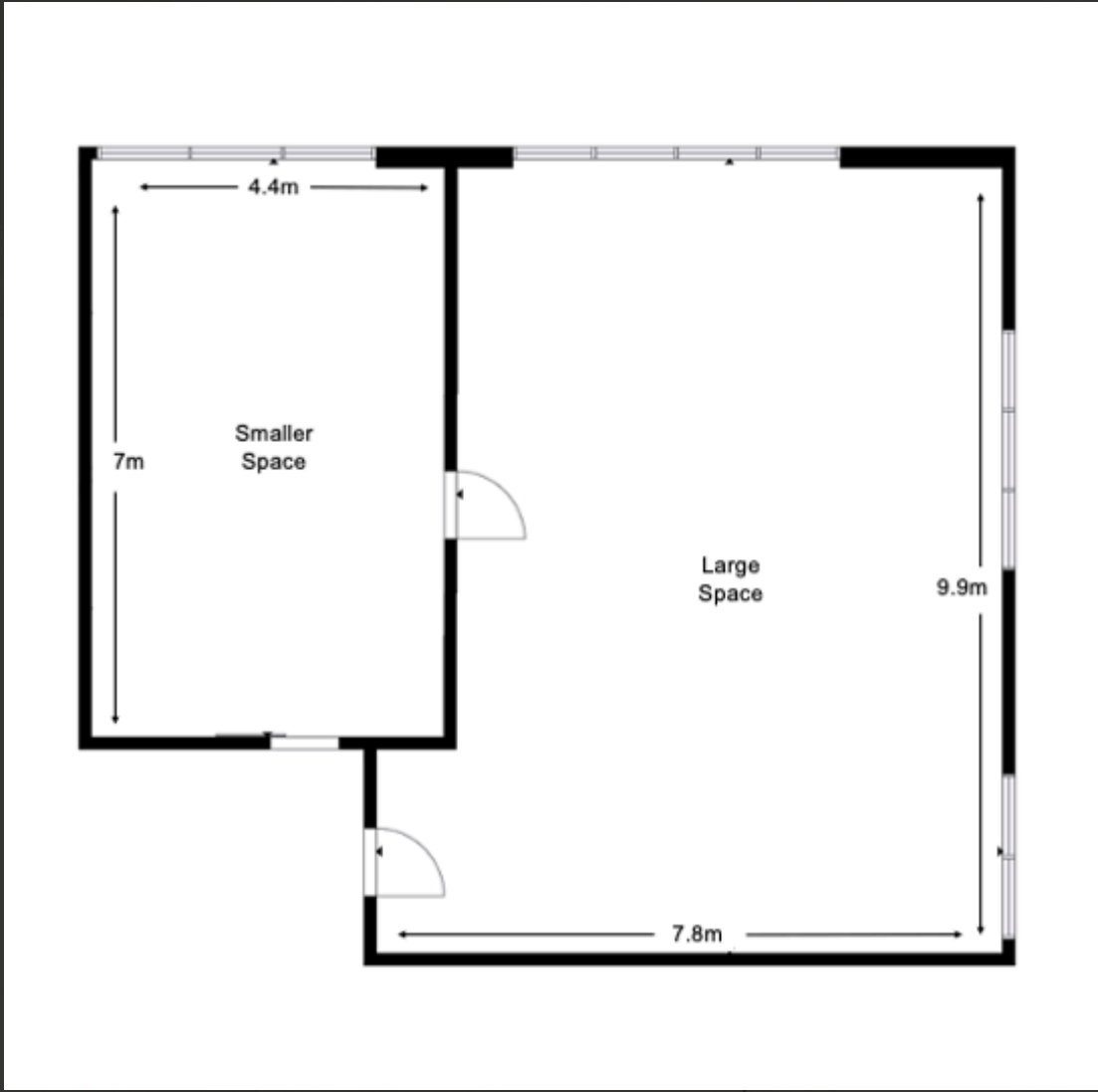
SPECS & INFO

Dimensions:	Room 7:	L: 9.9m x W: 7.8m (77.2m2)		
	Room 7A:	L: 7m x W: 4.4m (30.8m2)		
	TOTAL M2: 108m2			
Capacity:	Room 7:	50-60	Room 7A:	10-15
	TOTAL:	60-75max		
Parking:	Main St:	1P, 8am-6pm (Mon-Sat) <small>FREE OTHER TIMES</small>		
	Hailes St:	2P, 8am-6pm (Mon-Sat) <small>FREE OTHER TIMES</small>		
	Savers Carpark:	2P, 8am-6pm (Mon-Sat) <small>FREE OTHER TIMES</small>		
	Greenzy Plaza:	FREE ALL DAY		
Availability:	MON - THU:	Morning/Day Available (Until 3pm)		
	FRI & SUN:	All Day Available (No time Restrictions)		
	SAT:	Arvo/Evening Available (After 1pm)		
Nearby:	Greensborough Hotel:	30m		
	Greensborough Station:	300m		
	Greensborough Plaza:	200m		
	Watermarc:	250m		
<i>Plenty of local amenities, retailers, restaurants and services all within a short walks distance.</i>				
Note:	Kitchen and Bathroom at this venue are shared spaces with the other businesses in the building.			

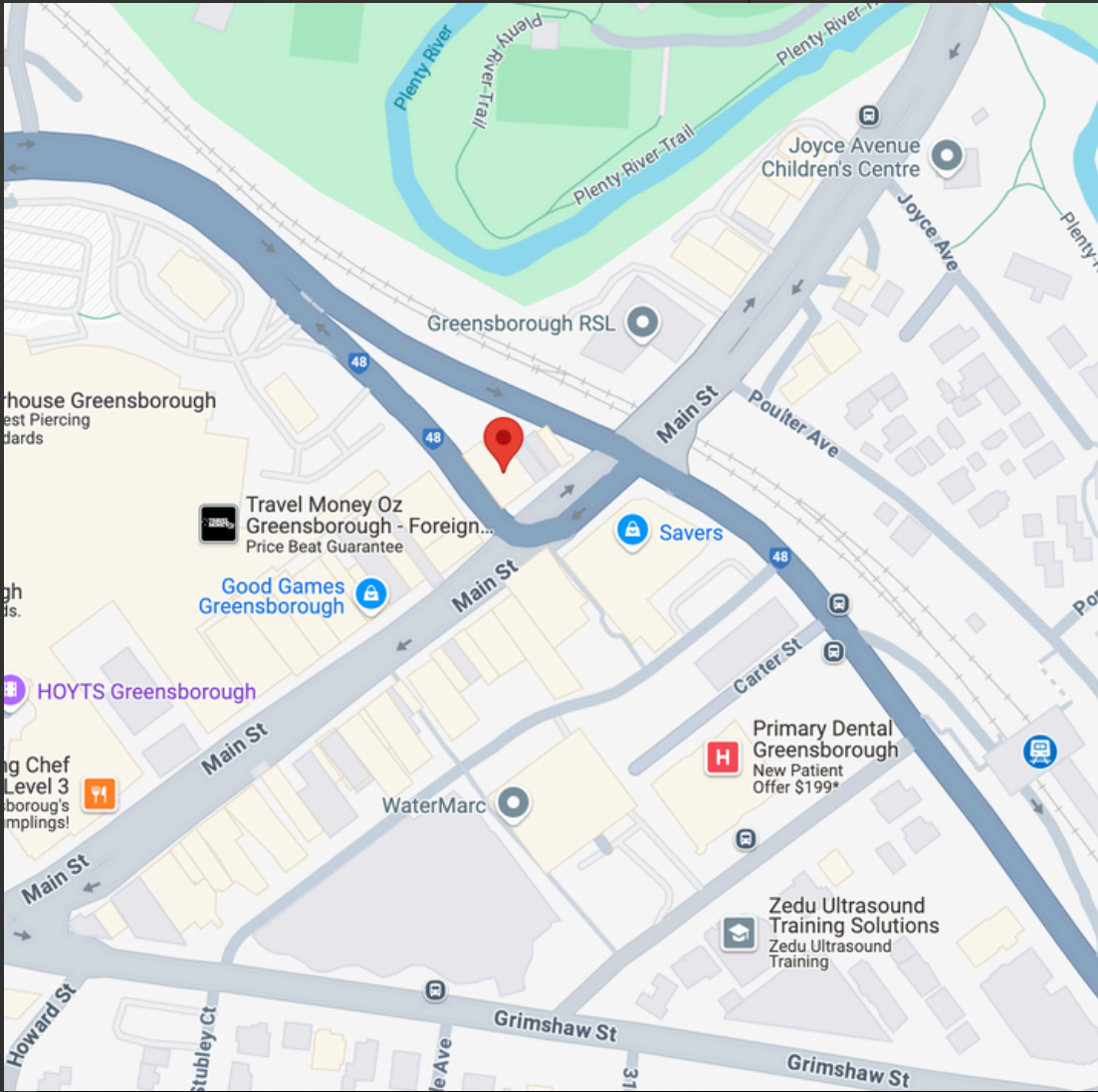


The Action Drama SPACE

FLOORPLAN



MAP



Venue Hire Extras

FEATURES OF VENUES

WIFI Access

Heating & cooling

Plenty of natural light

Toilet/Bathroom

Kitchen with all amenities

Tables & chairs

Emergency equipment (Up to date)

AVAILABLE UPON REQUEST

(ADDITIONAL COSTS MAY APPLY)

Large TV Screen with connectors & adaptors

Projectors with screens, connectors & adaptors

Speakers & PA systems with connectors & adaptors (*inc. Bluetooth*)

Handheld microphones (*wired and/or wireless*)

LED Stage Lighting with small DMX desk control.

Desks/Work stations (*sitting & standing*)

Desktop computers, laptops & screens with connectors & adaptors

Printers with WIFI connections (*colour and/or B&W*)

Stationary & office supplies

Various costumes & props for creative purposes

Black stage blocks/platforms (*various sizes*)

Camera/filming equipment (*Sony, Canon, Handi-cams, microphones, Zoom audio recorders, SD cards, tripods, stabilizers/gimbals, green-screens, boom poles, cables, lighting, screens, clapper boards, etc.*)

Whiteboards with markers & dusters

Presentation Lecturn

Venue Technician available to operate equipment if help is required (*hourly rate applies*)

PRICING

COMPETITIVE PRICES TO FIT YOUR BUDGET!

We offer tailored pricing options for individual, community, and corporate group bookings, with varying rates (*hourly, lump-sum, etc.*) depending on the requirements of the booking (*no. of hours/days, equipment needs and more*).

Discover affordable options that meet your needs by sending us an enquiry to discuss further and get a custom quote for your event.

